

New Contemporary Style Home

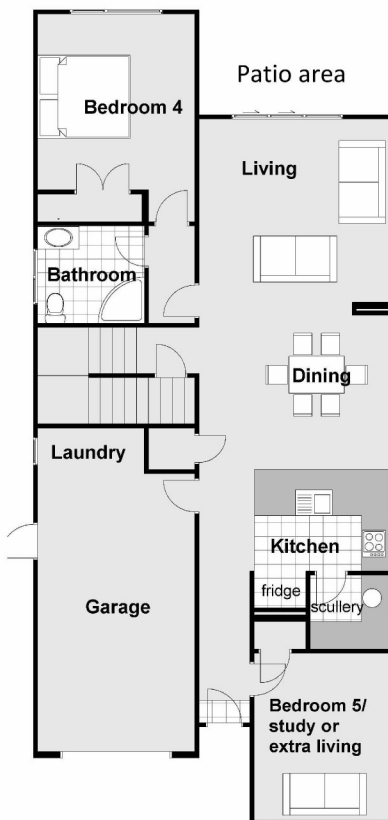
57 Melksham Drive (Lot 13) , Churton Park, Wellington



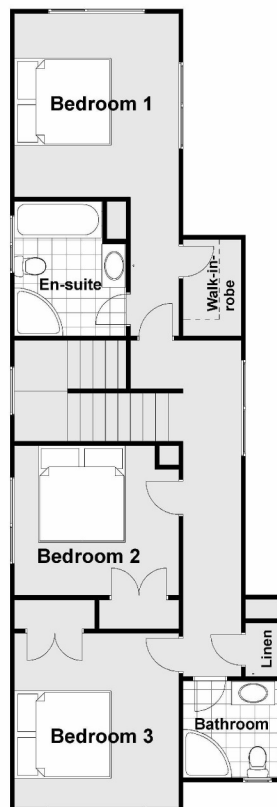
Artist impression only

FEATURES

- > 4 bedrooms with study or with extra separate living area, or 5 bedrooms
- > 3 bathrooms (one on ground floor)
- > Bedroom 1 with en-suite, WIR
- > Bedroom 4 on ground floor with bathroom
- > Kitchen (granite bench) and scullery
- > Open plan kitchen, dining, living area with access to outdoor patio area
- > Double glazed windows
- > Gas central heating
- > Single garage, internal access.
- > 10 year Master Build Guarantee
- > Floor area 191m²
- > PRICE: BEO \$937,500



Ground Floor Plan



First Floor Plan

RUSSELL
PROPERTIES ESTD 1977

Mike Russell

Mobile: 0274 482 233 Phone: 04 478 4632

Email: mike@russellproperties.co.nz